



# Steri-Oss Original Non-Hex 3.25 & 3.8 System

**S**teri-Oss, now a subsidiary of Nobel Biocare, developed the Steri-Oss implant system in 1985. From the beginning, the company has been an innovator in creating simplified, high quality implants, which have contributed greatly to its popularity.

### *Restorative Components:*

The restorative components are the elements used to fabricate a restoration that will be connected to the implant(s). The restoration may also be attached to an intermediate component called a tissue extension or abutment which in turn is connected to the implant(s).

### *Implant Body:*

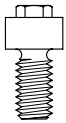
The implant body is placed into the bone for approximately 4-6 months to allow for osseointegration. The implants should not be loaded prior to osseointegration.



Steri-Oss Original

### *Tissue Extension:*

The TE (Tissue Extension) such as the UMA or PME, also referred to as an abutment, is the intermediate connector between the implant and the restoration, it may extend above the tissue. In some instances, a TE extension is subgingival, to provide a more esthetic restoration.



PME

### *Implant Standardization:*

The UMA tissue extension was developed to standardize the many different implant companies' components and instruments for a more economically controlled inventory and for simplicity of restorative procedures. Its tapered/hexagon fitting surface is identical, regardless of the size or type of implant employed, while its screw-in base is implant specific. The UMA is available for the Original 3.25 & 3.8 Non-Hex Implants.



UMA

### *Compatibility:*

Implants

■ **Steri-Oss Original**  
3.25 non-hex flat-top

■ **Steri-Oss Original**  
3.5, 3.8 and 4.0 non-hex flat-top

Restoratively Compatible To

none

Anchor 4.0  
Integral 4.0  
O-Butment 4.0

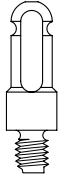


**IMPRESSION COPING**

The impression coping for the Steri-Oss Original Non-Hex implant is used to take an impression of the implant body. The flat sided titanium impression coping transfers the

thread timing.

When the UMA insert is used as a tissue extension, the standard line of UMA components are indicated.



A

- SD** Small Diameter Steri-Oss 3.25 Non-Hex (Flat Top) Implant
- MD** Medium Diameter Steri-Oss 3.8 Non-Hex (Flat Top), also fits 3.5 and 4.0 Non-Hex Implant



**Description**

**Impression Coping—To Fit Steri-Oss Original Non-Hex**

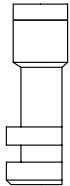
Impression Coping Non-Hex (A)

Order #	Order #
48-300080	48-400080

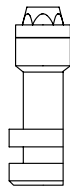
**ANALOGS**

The brass analogs are used for the fabrication of a master model. They replicate the fitting surface and the internal threads of the implant body or the UMA tissue extension.

When the UMA insert is used in place of the PME, the standard line of UMA components is indicated.



A



B



**Description**

Implant Body Analog, Brass (A)  
UMA Analog, Brass (B)

Order #	Order #
48-300015	48-400015
11-000015	11-000015



**UMA TISSUE EXTENSION**

The UMA tissue extension, like the PME, fits directly to the implant. When the UMA insert is used instead of the PME, the standard line of UMA components is indicated. Refer to the UMA section.



A

**SD** Small Diameter Steri-Oss 3.25 Non-Hex (Flat Top) Implant

**MD** Medium Diameter Steri-Oss 3.8 Non-Hex (Flat Top), also fits 3.5 and 4.0 Non-Hex Implant



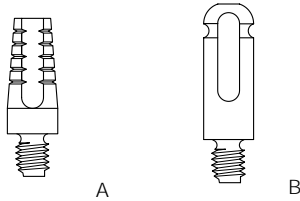
Description	Dimensions	Order #	Order #
<b>UMA, Tissue Extensions</b>			
UMA, Tissue extension	H=1.5mm	N/A	11-001715
UMA, Tissue extension	H=2.0mm	11-001702	11-001720
UMA, Tissue extension	H=3.0mm	11-001703	11-001730
UMA, Tissue extension	H=4.0mm	11-001704	11-001740
UMA, Tissue extension	H=5.0mm	11-001705	11-001750
UMA, Tissue extension	H=6.0mm	11-001706	11-001760
UMA, Tissue extension	H=7.0mm	N/A	11-001770
<b>TOOLS</b>			
Bio-Torq Socket		59-100190	59-100190
Bio-Torq UMA Tip Short		59-100150	59-100150
Bio-Torq UMA Tip Long		59-100155	59-100155
<b>USE WITH:</b>			
UMA, Tapered Impression Coping one piece			11-000080
UMA, Hex Impression Coping w/ .050" Hex Guide Pin			11-000090
UMA, Brass Analog			11-000015



**DIRECT TITANIUM SCREW-IN OR PLASTIC POSTS**

The direct titanium abutment post screws into the implant body and may be secured with Teflon tape, Omni-Lite or OMNI-Bond (see auxiliary products section). The tapered posts can be altered like a preparation. Grinding on the titanium post should be done outside of the oral cavity.

Fabricate a soft tissue model whenever preparations are made in the laboratory. If the final restoration is to be retrievable, then consider set screws. The plastic post should be cast only in precious or semi precious alloy. A die will refine the cast threads.



- SD** Small Diameter Steri-Oss 3.25 Non-Hex (Flat Top) Implant
- MD** Medium Diameter Steri-Oss 3.8 Non-Hex (Flat Top), also fits 3.5 and 4.0 Non-Hex Implant



Description	Dimensions	Order #	Order #
<b>Direct Titanium Posts</b>			
Direct Titanium Posts	2.0mm x 12mm	N/A	48-401220
Direct Titanium Posts	3.0mm x12mm	N/A	48-401230
<b>Direct Plastic Posts</b>			
Direct Plastic Posts	2.0mm x 12mm	48-301100	48-401100
<b>USE WITH:</b>			
Impression Coping		48-300080	48-400080
Implant Body Analog		48-300015	48-400015



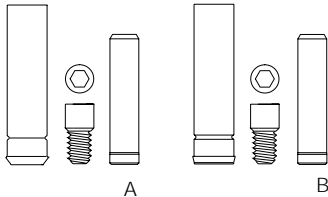
**Note:** Dimension refers to gingival vertical section before taper begins, overall height is 12mm.



**UCLA, CYLINDER, SCREW & PLUG (CSP)**

The UCLA abutment system is the most widely used restorative concept for single or bridge type restorations. The UCLA for Steri-Oss allows only bridge (non-hex) and bar type overdenture possibilities. Each UCLA CSP includes the castable plastic abutment (cylinder), .050" hex screw, and

the patented occlusal plug. The UCLA abutment is also referred to a CSP, Cylinder, Screw and Plug. For Steri-Oss Hex-Loc implant components refer to the Branemark / UCLA section of this manual.



- SD** Small Diameter Steri-Oss 3.25 Non-Hex (Flat Top) Implant
- MD** Medium Diameter Steri-Oss 3.8 Non-Hex (Flat Top), also fits 3.5 and 4.0 Non-Hex Implant



**Description**

**UCLA—Cylinder, Screw & Plug (CSP)**

UCLA, Non-Hex cylinder, .050" hex screw & plug, 3.25 (A)  
UCLA, Non-Hex cylinder, .050" hex screw & plug, 3.8 (B)

**PARTS**

UCLA, Plastic Abutment (Cylinder) Only  
UCLA, Screw Only, Titanium .050" Hex (fits both 3.25 & 3.8)

**USE WITH**

Impression Copings—To Fit Implant  
Implant Body Analog, Brass

**TOOLS**

Hex Drivers for all .050" Screws, Healing Caps, and Guide Pins

Hex Lab Driver

Hex DDS .050" Driver 12mm, Long

**REAMER**

Steri-Oss / Integral 4.0 Reamer, blue handle for 4.0

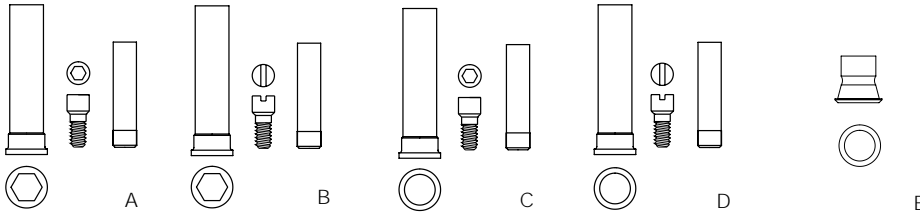
Order #	Order #
48-300252	—
—	48-400252
48-300250	48-400250
48-400052	48-400052
48-300080	48-400080
48-300015	48-400015
	11-000006
	11-000007
	45-000153



**UMA, CYLINDER, SCREW & PLUG (CSP)**

To set an industry standard, we have available the UMA in place of the PME. The UMA, CSP consists of a machined plastic cylinder hex or non-hex (bridge) type, a hex or slot screw, and an occlusal plug to seal the opening of the

occlusal access hole. The hex cylinders are used for single or telescopic abutments, while the non-hex cylinders are used for bridges or bar retained overdentures.



**SD** Small Diameter Steri-Oss 3.25 Non-Hex (Flat Top) Implant

**MD** Medium Diameter Steri-Oss 3.8 Non-Hex (Flat Top), also fits 3.5 and 4.0 Non-Hex Implant

Description	Order #
<b>UMA—Cylinder, Screw &amp; Plug (CSP)</b>	
UMA, CSP Hex Cylinder, Hex .050" Screw & Plug (A)	11-000202
UMA, CSP Hex Cylinder, Slot Screw & Plug (B)	11-000201
UMA, CSP Non-Hex Cylinder, .050" Hex Screw & Plug (C)	11-000252
UMA, CSP Non-Hex Cylinder, Slot Screw & Plug (D)	11-000251
<b>UMA—Cylinders Only</b>	
UMA, Cylinder Only, Hex Plastic, Blue	11-000200
UMA, Cylinder Only, Bridge Plastic, Yellow	11-000250
UMA, Short Bar Cylinder Only, Red (E)	11-000270

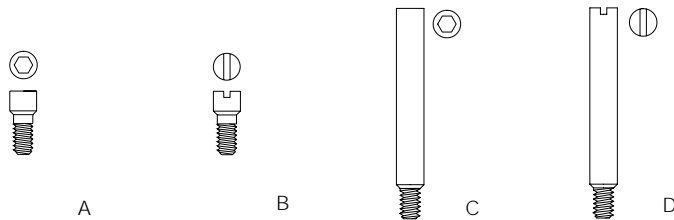


**Note:** The UMA components will not fit with the PME abutment.

**UMA, SCREWS & GUIDE PINS**

Two types of screws and guide pins are available, a hex type requiring the standard .050" driver, and a slot type

requiring a standard slot screwdriver. The hex guide pin is also used with the hex impression coping.



Description	Order #
<b>UMA—Screws &amp; Guide Pins</b>	
UMA, .050" Hex Screw (A)	11-000052
UMA, Slot Screw (B)	11-000051
UMA, .050" Hex Guide Pin (C)	11-000062
UMA, Slot Guide Pin (D)	11-000061

**TOOLS**

**Drivers—For all .050" Screws, Slot Screws, Healing Caps & Guide Pins**

DDS Slot Screwdriver	11-000005
Hex .050" Lab Driver	11-000006
Hex .050" DDS Driver 12mm, Long	11-000007



**Note:** For Slot Screws do not exceed 10 N/cm of torque.

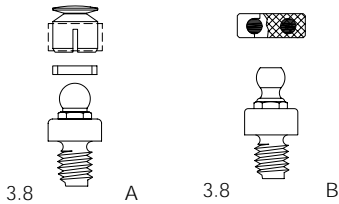


**OVERDENTURE STUD TYPE ATTACHMENTS**

Two overdenture attachments are commonly used to directly screw into the implant, the Dalla Bona and the ORS, O-Ring system. Both connectors are made of titanium and are attached directly to the implant body. The Dalla Bona includes 1 male, 1 adjustable female, 1 spacer and 1 brass

analog. The ORS includes 1 male, 1 retainer ring, 3 white and 3 red O-Rings and a brass analog.

The retention of the Dalla Bona female is adjustable with the activating/deactivating tool.



**SD** Small Diameter Steri-Oss 3.25 Non-Hex (Flat Top) Implant  
**MD** Medium Diameter Steri-Oss 3.8 Non-Hex (Flat Top), also fits 3.5 and 4.0 Non-Hex Implant



Description	Dimensions*		Order #	Order #
<b>Dalla Bona (A)</b>				
Dalla Bona, complete	H=1mm		48-343010	48-443010
Dalla Bona, complete	H=2mm		48-343020	48-443020
Dalla Bona, complete	H=3mm		48-343030	48-443030
Dalla Bona, complete	H=4mm		48-343040	48-443040
Dalla Bona, complete	H=5mm		48-343050	48-443050
Dalla Bona, complete	H=6mm		48-343060	48-443060
Dalla Bona, complete	H=7mm		N/A	48-443070
<b>ORS, O-Ring System (B)</b>				
ORS, complete	H=1mm		48-344010	48-444010
ORS, complete	H=2mm		48-344020	48-444020
ORS, complete	H=3mm		48-344030	48-444030
ORS, complete	H=4mm		48-344040	48-444040
ORS, complete	H=5mm		48-344050	48-444050
ORS, complete	H=6mm		48-344060	48-444060
ORS, complete	H=7mm		N/A	48-444070
<b>TOOLS</b>				
Bio-Torq Socket			59-100190	59-100190
Dalla Bona/ORS Tip			59-100140	59-100140
LT/RA Handle			58-100190	58-100190
LT/RA ORS / Dalla Bona Tip			58-100140	58-100140
Dalla Bona Activating Tool, Blue			99-451017	99-451017
Dalla Bona Deactivating Tool, Yellow			99-451018	99-451018

**Note:** \*The Dalla Bona male ball diameter for all sizes of the SD and the MD is 4.5mm



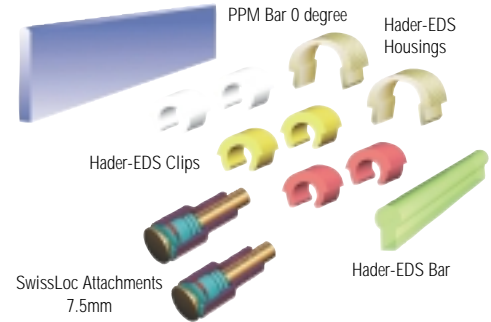
**UBS BAR SYSTEM**

The UBS—Ultimate Bar System is a convenient kit designed to facilitate the construction of implant bar retained overdentures. In designing this system, consideration has been given to function, ease of use and prevention of distal lift-off while allowing resiliency from the most anterior bar segment.

**Applications:** Indications are for bar overdentures, precision partial dentures and patient removable implant restorations.

**Each system includes:**

- 1 Hader-EDS Bar, green plastic (50mm)
- 6 Hader-EDS clips—2 of each retention (2 white, 2 yellow, 2 red)
- 2 Hader-EDS Housings, gold plated stainless steel
- 1 Hader-EDS Seating Tool
- 2 SwissLoc Attachments 7.5mm—adjustable to 4.0mm
- 2 SwissLoc Processing Jigs
- 1 PPM Bar 0 degree, blue plastic (50mm)
- 1 PPM 0 degree Mandrel
- 1 RA 1.5mm Reamer



Description	Order #
<b>UBS BAR KIT</b>	
UBS - Ultimate Bar System	99-551000

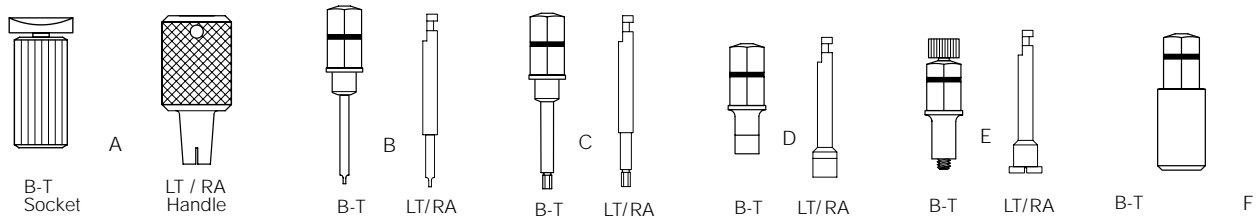


**Note:** To purchase components or parts separately, refer to the respective pages in the Renew Biocare main catalog.

**INSERTION DRIVERS**

The Bio-Torq (B-T) and LT/RA Systems were designed to facilitate the insertion of implant components. The Bio-Torq Steri-Oss compatible insertion tips may be utilized with the

Bio-Torq socket / adaptor or the Bio-Torq wrenches. The LT/RA (latch type) tips are used with right angle handpiece type drivers.



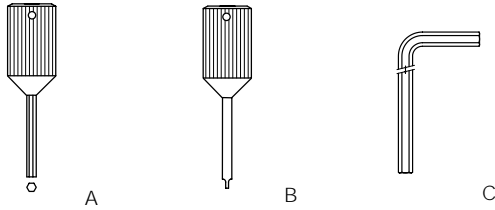
Description	Order #	Order #
Hand Held Socket / Handle (A)	<b>Bio-Torq</b> 59-100190	<b>LT/RA Driver</b> 58-100190
Slot Tip Short	59-100110	58-100110
Slot Tip Long (B)	59-100115	58-100115
.050" Hex Tip Short	59-100120	58-100120
.050" Hex Tip Long (C)	59-100125	58-100125
ORS / DDB / PME Tip (D)	59-100140	58-100140
UMA Tip Short (E)	59-100150	58-100150
UMA Tip Long	59-100155	N/A
Bio-Torq Extension (F)	59-100195	N/A



**Note:** For Slot Screws do not exceed 10 N/cm of torque.



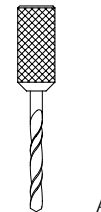
**STANDARD DRIVERS, B-T WRENCHES & LT/RA DRIVER**



Description	Order #
<b>Standard Drivers and FG Drivers</b>	
DDS .050" Hex Driver (A)	11-000007
DDS Slot Screwdriver (B)	11-000005
Lab .050" Hex Driver (C)	11-000006
<b>BIO-TORQ Wrenches &amp; LT/RA Driver</b>	
BIO-TORQ Wrench 10 N/cm	59-100010
BIO-TORQ Wrench 20 N/cm	59-100020
BIO-TORQ Wrench 30 N/cm	59-100030
LT/RA Driver	58-100000

**REAMERS**

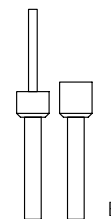
The reamers are used to refine the internal access hole of a castable cylinder. The reamers also refine the seat for the head of the screw. The reamer for the Steri-Oss 3.8 and Steri-Oss SD are identical to the reamers for the Branemark UCLA Regular. (A)



Description	Order #
Steri-Oss / Integral 4.0 Reamer, blue handle for 4.0	45-000153
UMA, Reamer, gold handle	11-000150

**LAPPING TOOLS & PASTE**

The Lapping tools are used with diamond polishing paste to refine the fitting surface of the cast cylinder. We recommend that you use it not more than 5-6 times. For superior restorations, you may want to use the 1 micron white diamond lapping paste. (B)



Description	Order #
Steri-Oss / Integral Lapping Tool and Guide Pin, SD & 3.8	45-000155
UMA, Lapping Tool and Guide Pin	11-000155
Lapping Paste, 1 micron white diamond	40-001010